

Code F5084/4

## FLOOR MOUNTED BATH TAP ON RISERS WITH SHOWER SET

- brass flex hose 1500 mm
- pair of standpipes M 1/2"
- handshower with antilimestone nozzles
- diverter
- **built-in part to be ordered separately**

## Finishing

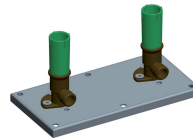
-  CHROM  
CR
-  BRUSHED NICKEL  
SN
-  GOLD  
OR
-  BRUSHED GOLD  
OS
-  OLD BRONZE  
BR
-  ANTIQUE COPPER  
RA

## IMAGE

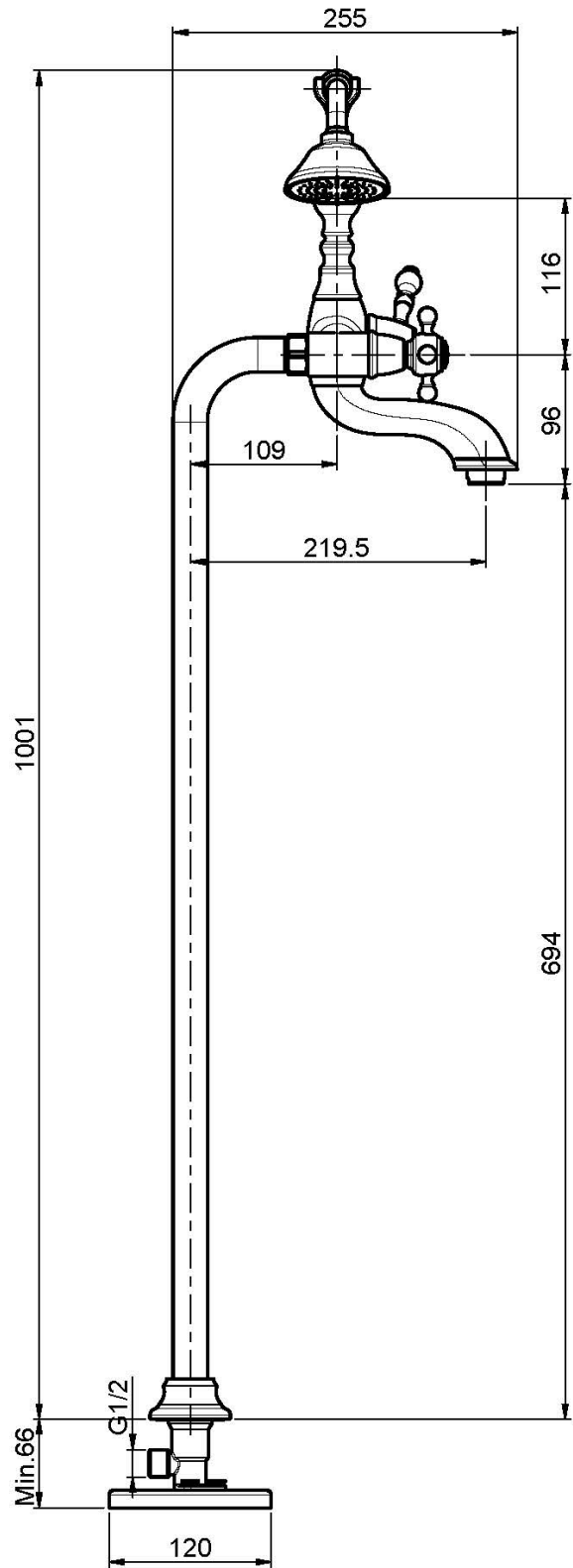
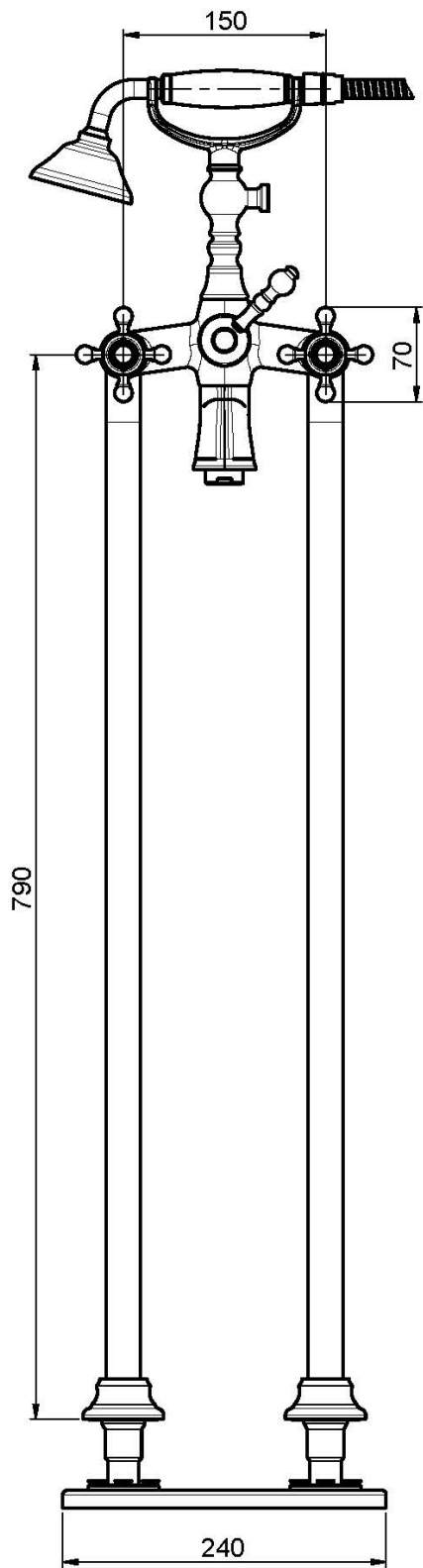


## PRODUCTS NEEDED TO BE ORDERED SEPARATELY

### [Built-in part](#)



See the general sales conditions in our current pricelist



This drawing is the property of FIMA Carlo Frattini. Any complete or partial reproduction, or any transmission to third party without FIMA Carlo Frattini authorization is forbidden.

