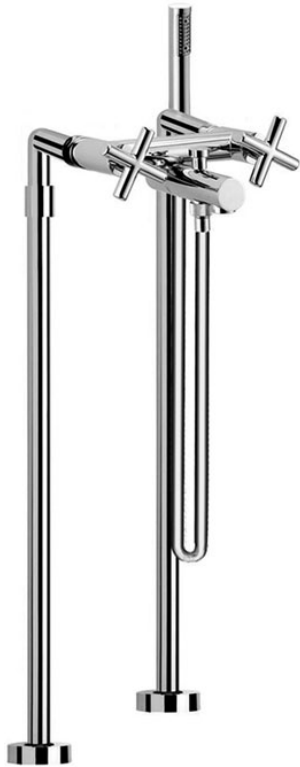


Code F5304/4








FLOOR MOUNTED BATH TAP ON RISERS WITH SHOWER SET

- pair of standpipes M 1/2"
- handshower with antilimestone nozzles
- diverter
- chromalux flexible hose 1500 mm

IMAGE

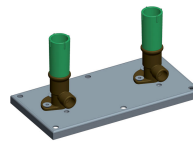


Finishing

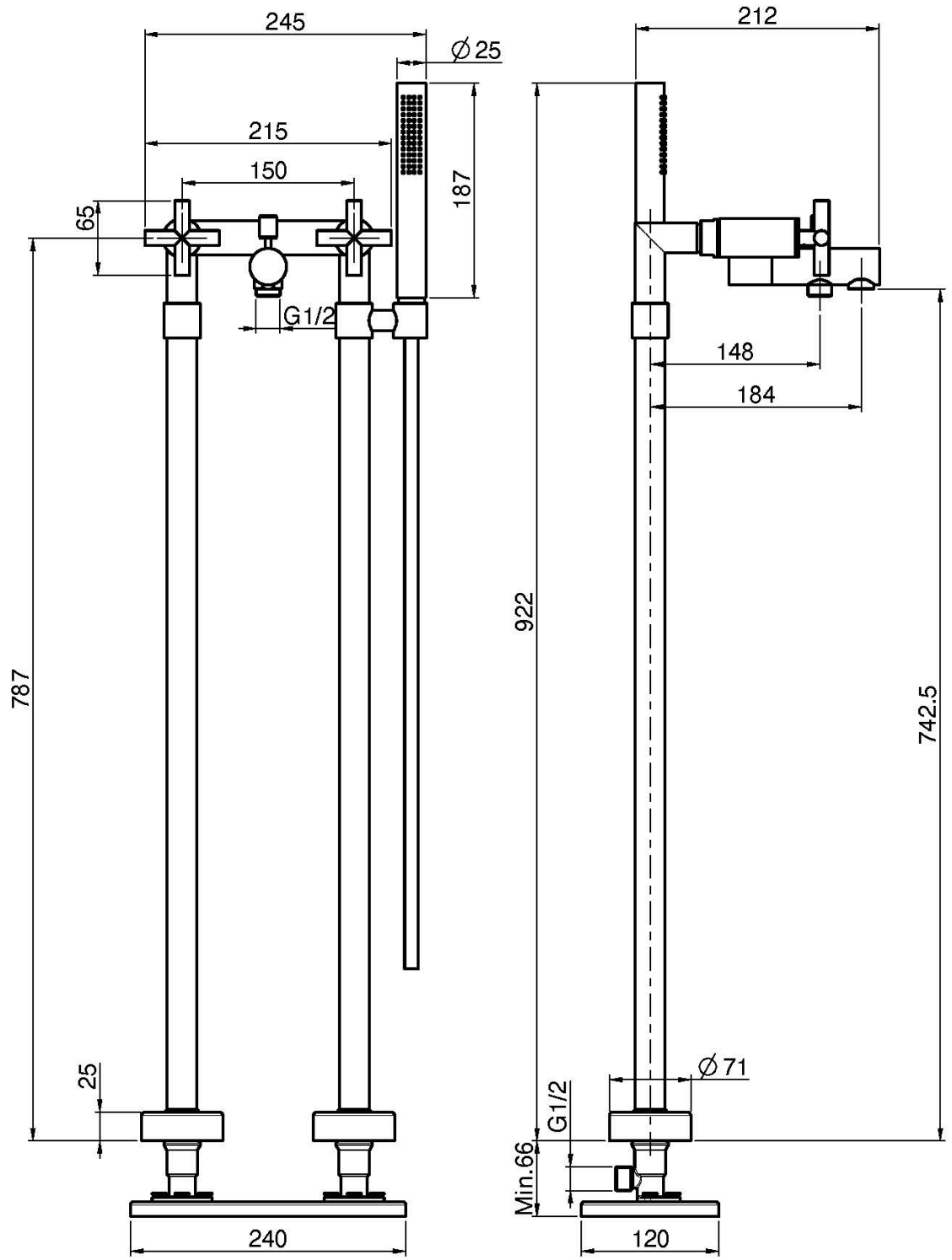
-  CHROM
CR
-  HL
-  HS
-  BRUSHED NICKEL
SN
-  BLACK CHROME
CN
-  BRUSHED BLACK CHROME
CS
-  WHITE MATT
BS
-  BLACK MATT
NS

PRODUCTS NEEDED TO BE ORDERED SEPARATELY

Built-in part



See the general sales conditions in our current pricelist



This drawing is the property of FIMA Carlo Frattini. Any complete or partial reproduction, or any transmission to third party without FIMA Carlo Frattini authorization is forbidden.

