

Code F3191/5

WALL MOUNTED THREE-HOLES BASIN MIXER

• HANDLES SOLD SEPARATELY

- exposed part only
- 1"1/4 brass click clack waste
- spout 150 mm

TO COMPLETE THIS PRODUCT PLEASE ORDER NR. 1 PAIR OF HANDLES S4 OR NR.2 HANDLES S2











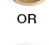
- **built-in part to be ordered separately**

IMAGE



See the general sales conditions in our current pricelist

Finishing

-  CHROM
CR
-  HL
-  HS
-  ZL
-  ZS
-  BRUSHED NICKEL
SN
-  BLACK CHROME
CN
-  BRUSHED BLACK CHROME
CS
-  WHITE MATT
BS
-  BLACK MATT
NS
-  GOLD
OR
-  BRUSHED GOLD
OS

PRODUCTS NEEDED TO BE ORDERED SEPARATELY

[Built-in part](#)

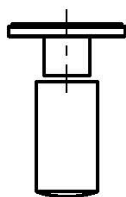
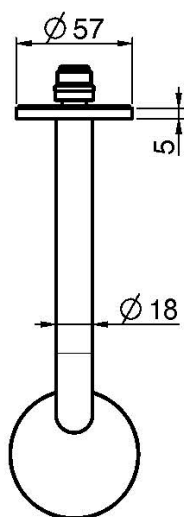
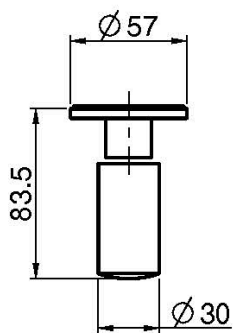
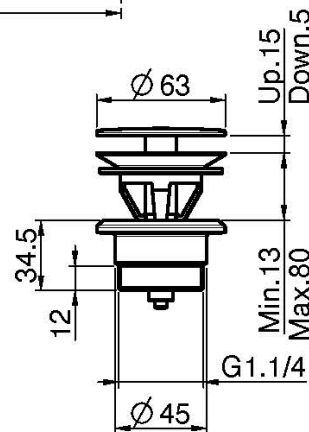
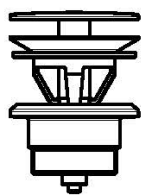
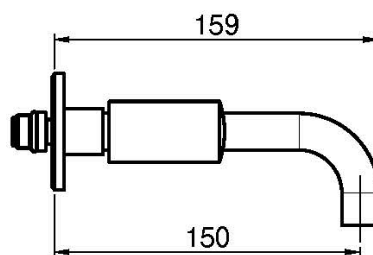
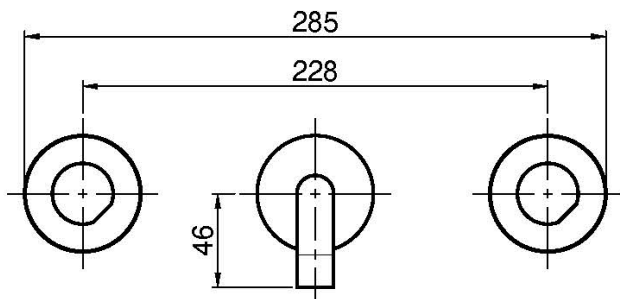


[Handle S2](#)



[Pair of handles S4 for three-holes basin mixer](#)





This drawing is the property of FIMA Carlo Frattini. Any complete or partial reproduction, or any transmission to third party without FIMA Carlo Frattini authorization is forbidden.

